

KENTALROOF CONFORT 450 T4 1,1kW (27945490PA)

GENERAL DATA



ROOF FAN WITH HINGED SYSTEM AND ABS COWL

MANUFACTURING FEATURES:

- ABS protection cowl easily removable for access to motor and impeller thanks to the integrated folding system. The ABS cowl is characterized by its toughness, resistance to impacts and is able to withstand extreme ambient temperatures. 100% of the ABS used in the this cowl is recycled.
- The design of the cowl with a **rounded shape** is specific to minimize the risk of water ingress due to rain.
- Equipped with a **hinged system** to open the motor-impeller set. This system allows easy maintenance and cleaning of the set without the need to disassemble the entire structure. The opening is possible in 2 inclinations: approximately 45° and 90°, as required by the intervention.
- Structure in anticorrosive galvanized steel and support frame for adaptation to the roof with anti-bird protection grid.
- High-performance, backward-curved blade (reaction) impellers designed to work without scroll. Self-cleaning system, built in galvanized steel treated with anti-corrosion.
- Standard asynchronous squirrel cage motor with IP-55 protection and Class F insulation. Standard voltages 230V 50Hz for single phase motors, 230/400V 50Hz for three phase motors up to 4kW & 400/690V 50Hz for higher powers and 400V 50Hz for 2 speed motors.

APPLICATIONS

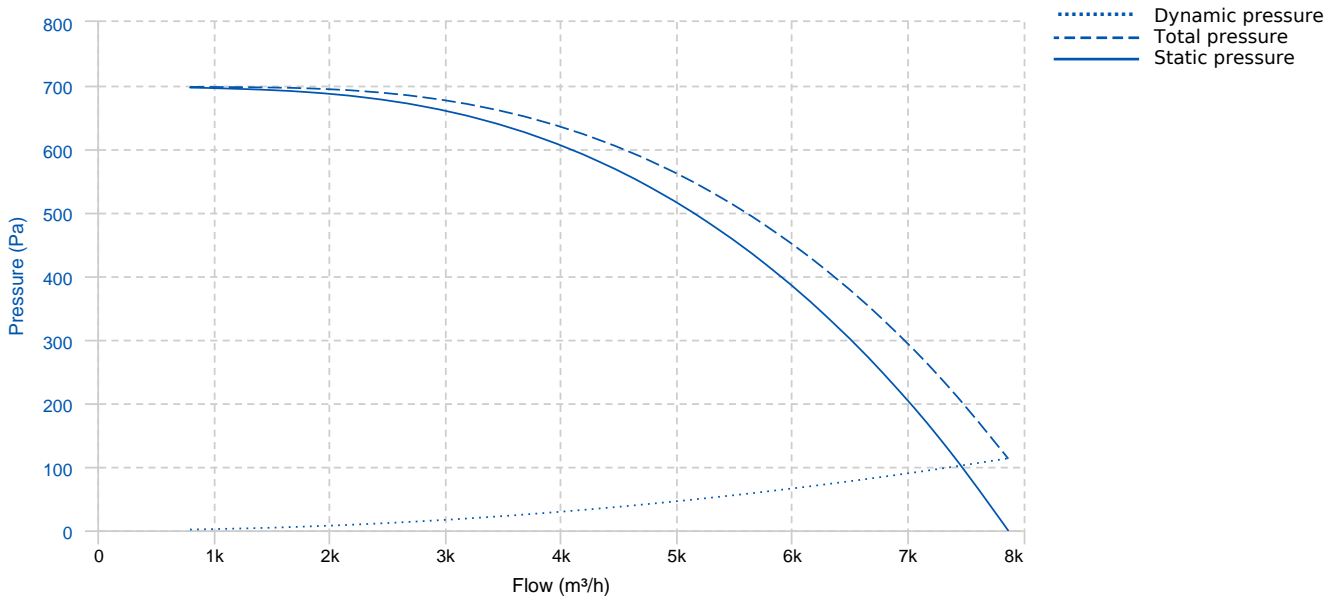
Designed for deck or roof mounting, they are indicated for:

- Smoke extraction.
- Air renewal in all types of buildings and industries.
- Maximum continuous working temperature: transported air 80°C, ambient 60°C to -25°C in three-phase motors.

UNDER REQUEST

- Special voltages.

PERFORMANCE CURVE

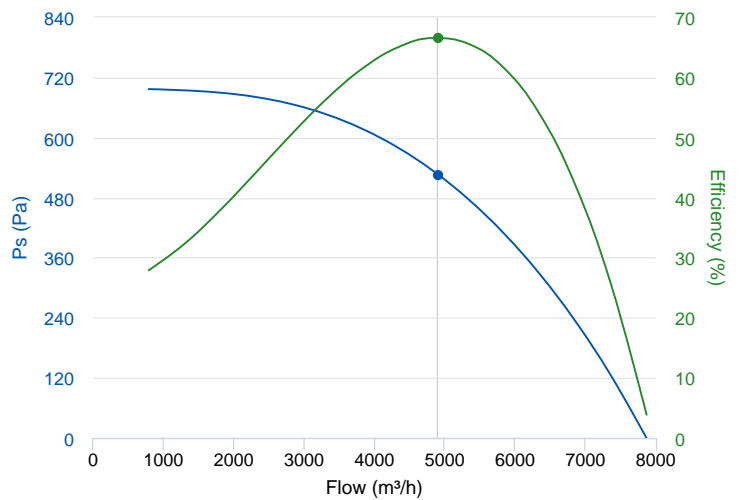


TECHNICAL DATA

Fan							
RPM	1450	Approx. weight	85 kg	Max. Flow	7870 m³/h		
Motor							
Power	1,1 kW	RPM	1450	I max. (230V)	4,33 A	I max. (400V)	2,49 A
Size	90L	Approx. weight	23 kg	Efficiency (%)	84.1 %	FP	0.78

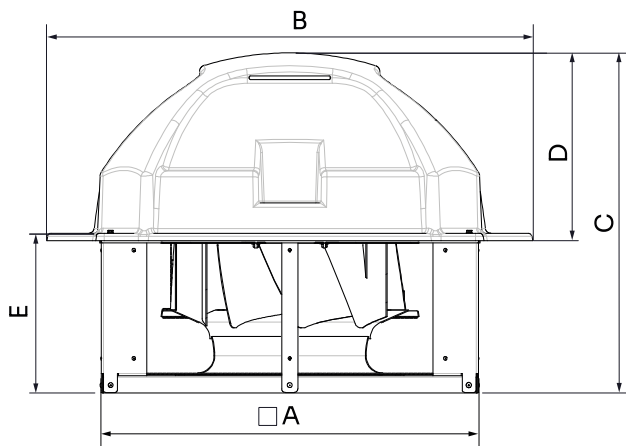
ERP DATA

Fan data sheet		
Fan type	Unit for non-residential ventilation (LOT 6)	
Typology	Unidirectional	
reports.other	None	
Type of driver	None	
Motor power (kW)	1.1	
	Fan values	ERP Requirements 2018
Max. efficiency (%)	66.59	42.77
Effic. Heat recovery (%)	-	
Pabs (kW)	1.132	
Flow (m³/h)	4906.11	
Static pressure (Pa)	525.85	
Speed (m/s)	8.57	



	Fan values	ERP Requirements 2018
SFP (W/m ³ /s)	830.68	

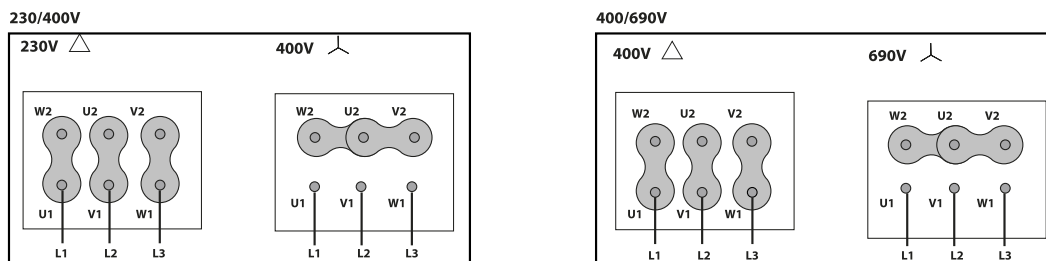
DIMENSIONS



Dimensions (mm)

A (int)	936	B	1227	C	775.8	D	470	E	323.8
---------	-----	---	------	---	-------	---	-----	---	-------

WIRING DIAGRAM



ACCESSORIES



SAFETY SWITCH
INT 25 3P A
REF: INT253PA



CONNECTION FLANGE
AC 450
REF: 960003213



CIRCULAR SILENCER
SIL-C 450/450
REF: 960045045



CIRCULAR SILENCER
SIL-C 450/900
REF: 960045090



CIRCULAR SILENCER
SIL-CN 450/ 675
REF: 961045675



CIRCULAR-CIRCULAR ANTI-VIBRATION FLANGE
BAD 12 (Ø450)
REF: 960003462



CIRCULAR SILENCER
SIL-C 450/ 675
REF: 960045675



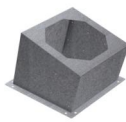
CIRCULAR SILENCER
SIL-CN 450/450
REF: 961045045



CIRCULAR SILENCER
SIL-CN 450/900
REF: 961045090



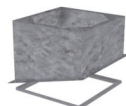
FREQUENCY SPEED CONTROLLER
SFC 230 I 7A *
REF: SFC230I007



INCLINED ROOF FAN SUPPORT
BTI 915
REF: A-50870915XX



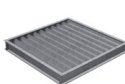
KENTALROOF VERTICAL DISCHARGE
KV KENTALROOF 450
REF: KVKNTR450



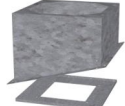
BTI + AMC MOUNTED
BTI+AMC 915
REF: BTIAMC915XX



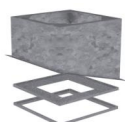
FREQUENCY SPEED CONTROLLER
SFC 400 III 3,6A *
REF: SFC400III4



DEPRESSION DAMPER (HORIZONTAL or VERTICAL PLACEMENT)
CMP-HUT 500x510
REF: CMPHUT5051

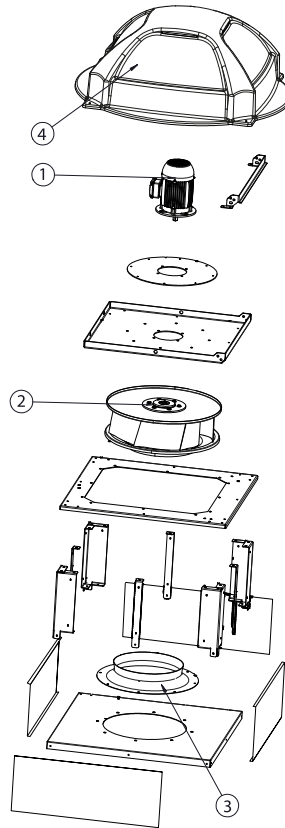


BTI + ACMP MOUNTED
BTI+ACMP 915
REF: BTIACMP915XX



BTI + ACMP+AMC MOUNTED
BTI+ACMP+AMC 915
REF: BTIACMPAMC915XX

SPARE PARTS



	Code	Model	Qty
1	721001152	MOTOR 1,1kW T4 B5 230/400V	x1
2	R-R63D1L450-24	IMPELLER R63D1L450x125x24 LG	x1
3	R-BAD450PK1	INLET CONE ED11P 450	x1
4	R-279564478	ROOF COWL KENTALROOF 450-500-560	x1